

Rubí Industria
de Cremalleras

metal





TECHNICAL DATA

EN

Metal:	3	5	8
Chain (mm):	4,3	6	8
Tape Polyester (mm):	12/13	15	18

CHAIN MATERIAL - CHAIN FINISH

Brass	X	X	X
Old brass	X	X	X
White Brass	X	X	X
Black Brass	X	X	X
Aluminium	X	X	X
Copper	X	X	X
Old Copper	X	X	X
Gold Cooper (CuZn15)	X	X	X
Copper-Manganese	X	X	X
German Silver	X	X	X
Black German Silver	X	X	X
Stainless Steel	X	X	X
Bimetal	X	X	X

TAPE FINISH

Colour Card	X	X	X
Raw Cotton Ivory	X	X	X
Polyester Cottonero			X
Satin	X	X	
Grosgrain	X	X	
Luxe	X	X	
Jeans	X	X	
Indigo / Indigo Rev.	X	X	
Bicolour	X	X	X
Fluorescent	X	X	X
Lurex Luxury		X	

SLIDERS

Zamak in galvanic finishes	X	X	X
----------------------------	---	---	---

STOP ELEMENT

Closed End	X	X	X
Open End	X	X	X
Open End (American System)	X	X	X
Two Ways Open End "DCS"		X	X
Two Ways Closed End "Mono"		X	X
Two Ways Closed End "Bag"		X	X
Two Ways Closed End "X"		X	X
Triplo Sliders Closed End "Trio"		X	X
Four Top Stops			X
Continuous Chain	X	X	X

SPECIAL FINISHES

Fire-Resistant Nomex Tape		X	X
Fire Retardant	X	X	X
Metalplus	X	X	X
Quick Release System			X
Laminated		X	X
Cover Nonmagnetic	X	X	
Reinforcement Tape	X	X	X

CARACTERISTICAS

ES

Metal:	3	5	8
Cadena (mm):	4,3	6	8
Cinta Poliéster (mm):	12/13	15	18

MATERIAL CADENA - ACABADO CADENA

Latón	X	X	X
Latón Envejecido	X	X	X
Latón Blanco	X	X	X
Latón Negro	X	X	X
Aluminio	X	X	X
Cobre	X	X	X
Cobre Envejecido	X	X	X
Cobre Dorado (CuZn15)	X	X	X
Cobre-Manganeso	X	X	X
Alpaca	X	X	X
Alpaca Negra	X	X	X
Acero Inoxidable	X	X	X
Bimetal	X	X	X

ACABADO CINTA

Carta de Colores	X	X	X
Algodón Crudo	X	X	X
Poliéster Cottonero			X
Saten	X	X	
Grosgrain	X	X	
Luxe	X	X	
Jeans	X	X	
Indigo / Indigo Rev.	X	X	
Bicolor	X	X	X
Fluorescente	X	X	X
Lurex Luxury		X	

CURSORES

Zamak en acabados galvánicos	X	X	X
------------------------------	---	---	---

TIPO DE CIERRE

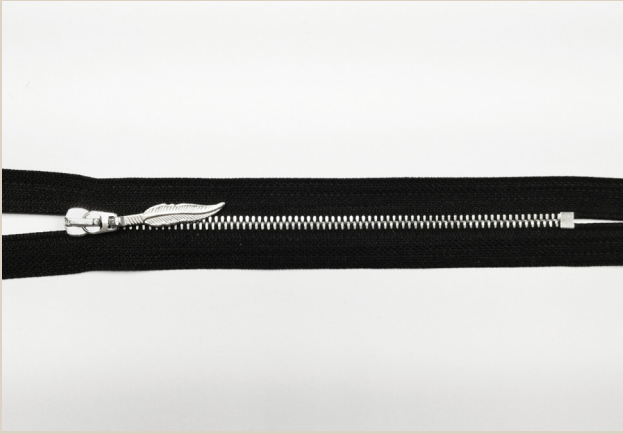
Cerrado	X	X	X
Separador	X	X	X
Separador (Sistema Americano)	X	X	X
Doble Cursor Separador "DCS"		X	X
Doble Cursor Cerrado "Mono"		X	X
Doble Cursor Cerrado "Bag"		X	X
Doble Cursor Cerrado "X"		X	X
Triple Cursor Cerrado "Trio"		X	X
Cuatro Terminales Superiores			X
Cadena Continua	X	X	X

ACABADOS ESPECIALES

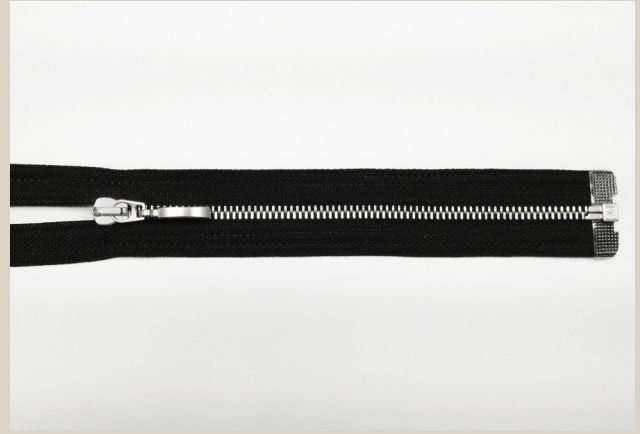
Ignífugo Con Cinta Nomex		X	X
Fuego-Retardante	X	X	X
Metalplus	X	X	X
Antipanico			X
Laminada		X	X
Cobertura No Magnetica	X	X	
Refuerzo Textil	X	X	X



CARACTÉRISTIQUES	FR			DATI TECNICI	IT		
Metal:	3	5	8	Metal:	3	5	8
Chaîne (mm):	4,3	6	8	Catena (mm):	4,3	6	8
Ruban Poliéster (mm):	12/13	15	18	Nastro Polyester (mm):	12/13	15	18
Type Chaîne - Finition de la Chaîne				Tipo Catena - Finitura Catena			
Laiton	X	X	X	Ottone	X	X	X
Laiton Vieilli	X	X	X	Ottone Vecchio	X	X	X
Laiton Blanc	X	X	X	Econichel	X	X	X
Laiton Noir	X	X	X	Ottone Brunito	X	X	X
Aluminium	X	X	X	Alluminio	X	X	X
Cuivre Rouge	X	X	X	Rame	X	X	X
Cuivre Rouge Vieilli	X	X	X	Rame Vecchio	X	X	X
Cuivre Rouge Doré (CuZn15)	X	X	X	Gold Cooper (CuZn15)	X	X	X
Cuivre Rouge-Manganèse	X	X	X	Manganese	X	X	X
Alpaca	X	X	X	Alpaca	X	X	X
Alpaca Noir	X	X	X	Alpaca Vecchio	X	X	X
Acier Inoxidable	X	X	X	Acciaio Inox	X	X	X
Bimetal	X	X	X	Bimetal	X	X	X
FINITION RUBAN				FINITURA NASTRO			
Carte Coloris	X	X	X	Cartella Colori	X	X	X
Coton Écru	X	X	X	Cotone PPT Grezzo	X	X	X
Poliester Cottonero			X	Polyester Cottonero			X
Satin	X	X		Satin	X	X	
Grosgrain	X	X		Grosgrain	X	X	
Luxe	X	X		Luxe	X	X	
Jeans	X	X		Jeans	X	X	
Indigo / Indigo Rev.	X	X		Indigo / Indigo Rev.	X	X	
Bicolor	X	X	X	Bicolor	X	X	X
Fluorescent	X	X	X	Fluorescente	X	X	X
Lurex Luxury		X		Lurex Luxury		X	
CURSEURS				CURSORE			
Zamack finitions galvaniques	X	X	X	Zama in finiture galvaniche	X	X	X
Type de Fermeture				Tipo Chiusura			
Fixe	X	X	X	Fissa	X	X	X
Séparable	X	X	X	Divisibile	X	X	X
Séparable (Système Américain)	X	X	X	Divisibile (Sistema Americano)	X	X	X
Double Curseur Séparable "DCS"		X	X	Doppio Corsore Divisibile		X	X
Double Curseur Fixe "Mono"		X	X	Doppio Corsore Fissa "Mono"		X	X
Double Curseur Fixe "Bag"		X	X	Doppio Corsore Fissa "Bag"		X	X
Double Curseur Fixe "X"		X	X	Doppio Corsore Fissa "X"		X	X
Triple Curseur Fixe "Trio"		X	X	Triplo Corsore Fissa "Trio"		X	X
Cuatro Arrêts du Haut			X	Quattro Terminali Superiori			X
Chaîne Continue	X	X	X	Catena Continua	X	X	X
FINITIONS SPÉCIALES				FINITURA SPECIALI			
Résistant Au Feu - Nomex		X	X	Nastro Nomex Ignifugo		X	X
Feu Retardant	X	X	X	Fuocoritardante	X	X	X
Metalplus	X	X	X	Metalplus	X	X	X
Fermeture À Ouverture Rapide			X	Antipánico			X
Maille Polie		X	X	Laminata		X	X
Cover Nonmagnetic	X	X		Cover Nonmagnetic	X	X	
Renfort Textile	X	X	X	Rinforzo Divisibile Taffetas	X	X	X



CLOSED END / CERRADO / FIXE / FISSA



OPEN END / SEPARADOR / SÉPARABLE / DIVISIBLE



TWO WAYS OPEN END "DCS" / DOBLE CURSOR SEPARADOR "DCS"
DOUBLE CURSEUR SÉPARABLE "DCS" / DOPPIO CURSORE DIVISIBILE "DCS"



TWO WAYS CLOSED END "MONO" / DOBLE CURSOR CERRADO "MONO"
DOUBLE CURSEUR FIXE "MONO" / DOPPIO CURSORE FISSA "MONO"



TWO WAYS CLOSED END "X" / DOBLE CURSOR CERRADO "X"
DOUBLE CURSEUR FIXE "X" / DOPPIO CURSORE FISSA "X"



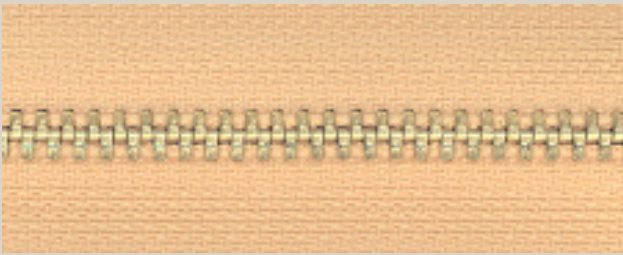
TWO WAYS CLOSED END "BAG" / DOBLE CURSOR CERRADO "BAG"
DOUBLE CURSEUR FIXE "BAG" / DOPPIO CURSORE FISSA "BAG"



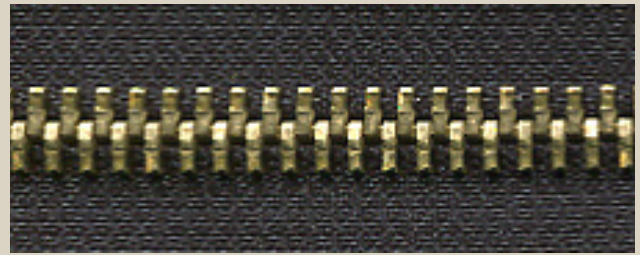
TRIPLO SLIDERS CLOSED END "TRIO" / TRIPLE CURSOR CERRADO "TRIO"
TRIPLE CURSEUR FIXE "TRIO" / TRIPLO CURSORE FISSA "TRIO"



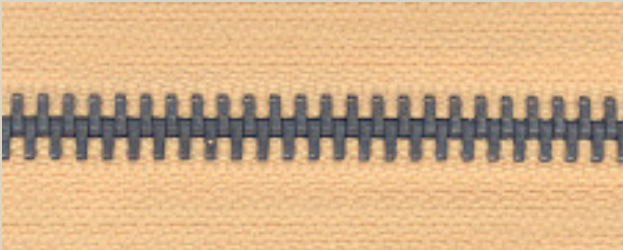
FOUR TOP STOPS / CUATRO TERMINALES SUPERIORES
QUATRE ARRÊTS DU HAUT / QUATTRO TERMINALI SUPERIORI



BRASS - LATÓN - LAITON - OTTONE



GOLD COPPER - COBRE DORADO - CUIVRE ROUGE DORÉ (CUZN15)



OLD BRASS - LATÓN ENVEJECIDO - LAITON VIEILLI - OTTONE VECCHIO



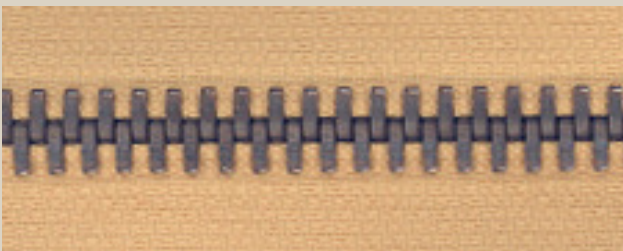
ALUMINIUM - ALUMINIO - ALUMINIUM - ALLUMINIO



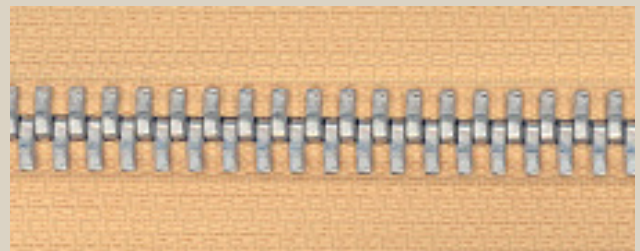
STAINLESS STEEL - ACERO INOXIDABLE - ACIER INOXIDABLE - ACCIAIO INOX



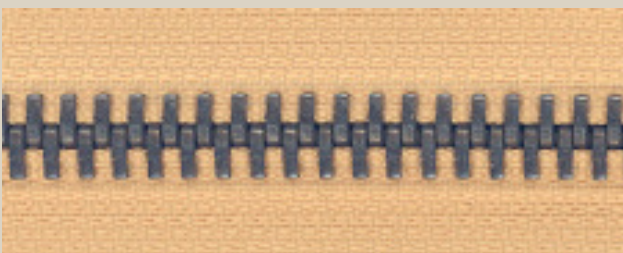
COPPER - COBRE - CUIVRE ROUGE - RAME



OLD COPPER - COBRE ENVEJECIDO - CUIVRE ROUGE VIEILLI - RAME VECCHIO



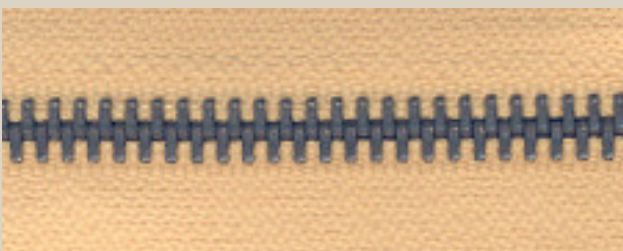
WHITE BRASS - LATÓN BLANCO - LAITON BLANC - ECONICHEL



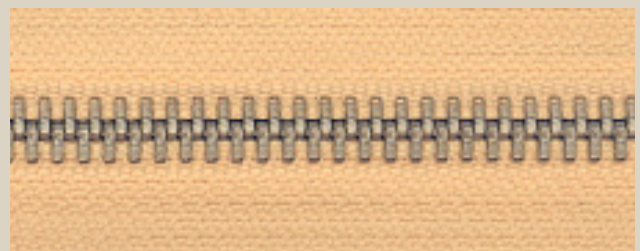
BLACK BRASS - LATÓN NEGRO - LAITON NOIR - OTTONE BRUNITO



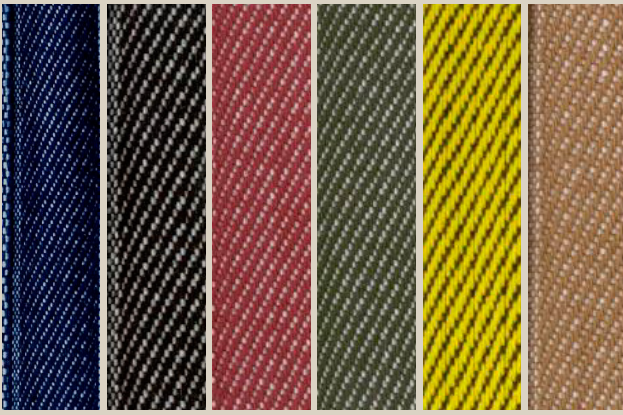
GERMAN SILVER - ALPACA



BLACK GERMAN SILVER - ALPACA NEGRA - ALPACA NOIR - ALPACA VECCHIO

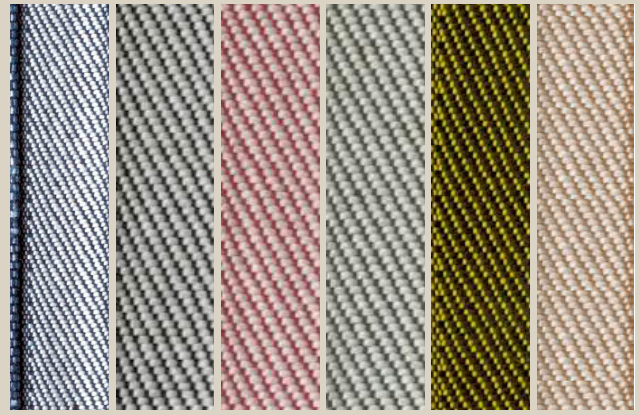


COPPER-MANGANESE - COBRE-MANGANESO - CUIVRE ROUGE-MANGANÈSE - MANGANESE



0000 7010 7015 7016 7017 7018

INDIGO



0000 7010 7015 7016 7017 7018

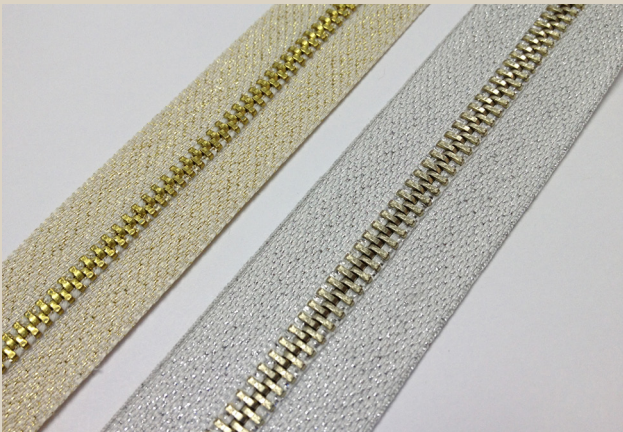
INDIGO REV.



JEANS



RAW COTTON IVORY / ALGODÓN CRUDO
COTON ÉCRU / COTONE PPT GREZZO



LUXE



FLUO



POLYESTER COTTONERO / POLIESTER COTTONERO



SATIN / SATEN



GROSGRAIN



LUREX LUXERY



FIRE-RESISTANT NOMEX TAPE / IGNÍFUGO CON CINTA NOMEX
RÉSISTANT AU FEU - NOMEX / NASTRO NOMEX IGNIFUGO



METALPLUS



QUICK RELEASE SYSTEM / ANTIPANICO
FERMETURE À OUVERTURE RAPIDE / ANTIPANICO



REINFORCEMENT TAPE / REFUERZO TEXTIL
RENFORT TEXTILE / RINFORZO DIVISIBILE TAFFETAS



BIMETAL



SUBLIMATION / SUBLIMACIÓN / SUBLIMATION / SUBLIMAZIONE